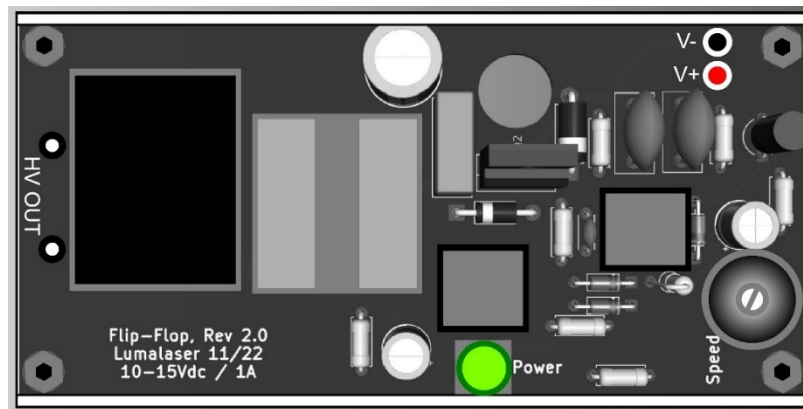


COLOR CHANGING NEON POWER SUPPLY

Flip-Flop, Rev 2.0, 1/25



This power supply is designed for 2 electrode traditional neon units. The effect works with clear glass and coated glass such as BLUE, GREEN, TURQUOIS, YELLOW. Other color coated tubes may also work. The tube should be processed and filled with neon gas as if it were a normal neon unit but with the addition of a small amount of mercury (do not add argon gas). We recommend experimenting with different glass diameters, lengths supply voltage as well as pressure and the amount of mercury to find unique effects.

INPUT

- 10 to 15 VDC
- RED + / Black - (supplied 12 inch wire leads)
- 1 AMP MAX

DIMENSIONS

- 4.125 x 2.125 x 1.125 inches (105 x 54 x 29 mm)
- 4.5 oz (127 g)

CONTROL

- ONBOARD (SPEED KNOB)

OUTPUT

- 7,000 VAC MAX. (output voltage will vary depending on load)
- 10 MA MAX.
- 14 inch 18awg leads

NOTE

Due to the unique varying operating frequency of this power supply, a faint electrical whining sound may be noticed in quiet environments. Heavier loads and operating voltage may make this more noticeable. Usually once installed into a display, the sound is no longer noticeable.

WARNING

This power supply produces high voltage which can be hazardous and should only be installed by qualified individuals. Users assumes all liabilities. Lumalaser, inc. makes no claims regarding fitness for any specific installation.



**Proudly made in the
USA**