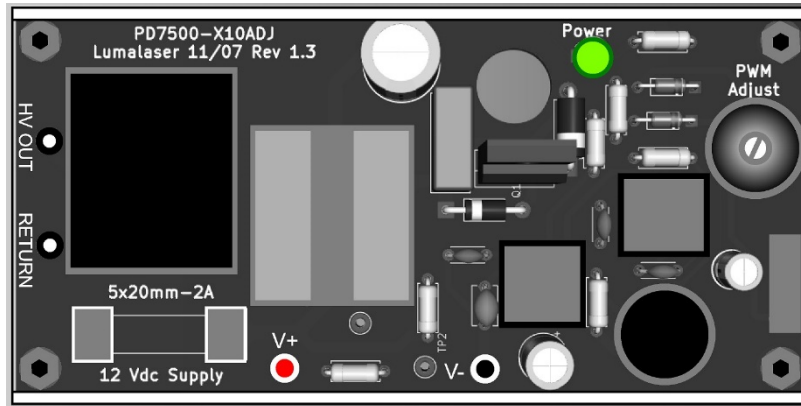


PWM DIMMING NEON & PLASMA POWER SUPPLY

PD7500-X10ADJ, Rev 1.3, 1/25



This power supply is designed to drive traditional neon as well as other gas filled displays using 1 or 2 electrodes. With the onboard PWM adjustment knob, the display can be dimmed from full on to almost completely off while maintaining an even intensity throughout the tube. The PWM adjustment also provides control over the plasma discharge in single electrode displays allowing for additional creativity and experimentation.

INPUT

- 11 to 13.5 VDC
- RED + / Black - (supplied 12 inch wire leads)
- 2 AMP MAX

DIMENSIONS

- 4.125 x 2.125 x 1.125 inches (105 x 54 x 29 mm)
- 4.5 oz (127 g)

CONTROL

- ONBOARD (PWM DIMMING KNOB)

OUTPUT

- 7,500 VAC MAX. (output voltage will vary depending on load)
- 15 MA MAX.
- 14 inch 18awg leads

NOTE

For single electrode displays, you must use the output lead with the RED band. This is also noted on the power supply as HV OUT. For single electrode use, it is recommended to provide an earth ground to the negative wire of the transformer input.

WARNING

This power supply produces high voltage which can be hazardous and should only be installed by qualified individuals. Users assumes all liabilities. Lumalaser, inc. makes no claims regarding fitness for any specific installation.



**Proudly made in the
USA**